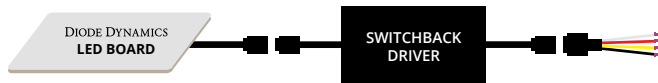


8. First, connect the board connector to the Switchback driver output. Connect the Switchback driver input to the pigtail. Finally, tap the wires in the chart below to the corresponding wires on the pigtail. **The black wire must be grounded before any function will work.**



| DD WIRE | PIN | DRIVER WIRE | PASSENGER WIRE |
|---------|-------------|--------------------|----------------|
| WHITE | DRL | WHITE/PURPLE | WHITE/PURPLE |
| RED | PARKING | PURPLE/WHITE | PURPLE/WHITE |
| YELLOW | TURN SIGNAL | LIGHT GREEN/ORANGE | BROWN/YELLOW |
| BLACK | GROUND | BLACK/GREY | BLACK/GREY |

NOTE: For EU/AU Mustangs, you will need to locate and identify the proper factory wires to tap for power using a multimeter or voltmeter. The wire colors listed on the installation guide are for USDM models only.

IMPORTANT: DO NOT plug the LED panel directly into pigtail without the driver. The LEDs must be plugged into driver first to control the power.

9. Mount driver and tuck all wires. Driver should be mounted outside of headlight for serviceability, in a location away from the engine block to avoid excessive heat buildup.

10. Test thoroughly, reseal headlight and reinstall onto vehicle.

Please contact **Diode Dynamics** should you have any questions about the installation or wiring process, at **314-205-3033** (9a-5p CST) or **contact@diodedynamics.com**.

NEED MORE HELP?

Scan the QR code to link to our installation video online!

We've taken the time to test our products on your vehicle. We can guarantee compatibility and fitment the first time – no guessing game! If you need more help with installation, watch our step-by-step video to walk you through the process.

YouTube



**100% SATISFACTION
GUARANTEE**

**3 YEAR
WARRANTY**



This installation guide is for the following SKU:

DD2115 Mustang 2015 Switchback LED Boards USDM

DD2151 Mustang 2015 Switchback LED Boards EU



DIODE DYNAMICS

PERFORMANCE LIGHTING TECHNOLOGY

2015-2017 Ford Mustang Pro Series Switchback DRL LED Board Installation Guide

**PRO
SERIES**



DIODE DYNAMICS

2015-2017 Ford Mustang Pro Series

Switchback DRL LED Board Installation Guide

Thank you for your purchase of this unique product for your Ford Mustang! With these boards, you will be able to convert your factory LEDs inside the headlight into a white running light, along with a sequential amber turn signal. They are a direct replacement for the factory LED panels inside the light.

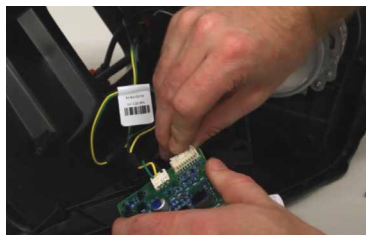


Please note: Headlights must be opened before proceeding with installation. Professional installation is strongly recommended. Please contact Diode Dynamics if you need assistance locating an installer.

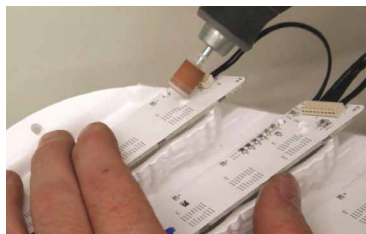
Tools Needed: Dremel Rotary Tool, Safety Glasses, 5-minute Epoxy, and Phillips Screwdriver



1. Remove the main bezel. Access the factory LED panels by removing the screws holding the DRL housing assembly (white bezel) in place. Once the screws are removed, pull the white bezel away from the headlamp housing.



2. Remove the black panel covering the factory driver board by taking out the screws. Pull the black panel out and remove the screws holding the factory driver in place. Pull the driver board up and unplug the wires from the factory boards, unplugging the DRL housing. If desired, you may leave the factory driver in place by replacing the screws.



3. Bring the DRL housing to a clean area. Remove the factory LED boards, by shaving down the plastic rivets holding the LED panels to the housing with a rotary (Dremel) tool. There is a rivet at the top and bottom of each panel. Panels should fall off.

DIODE DYNAMICS

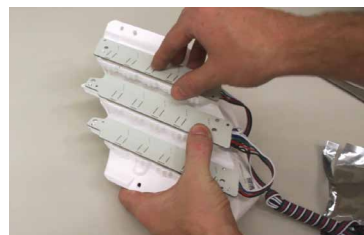
2015-2017 Ford Mustang Pro Series

Switchback DRL LED Board Installation Guide

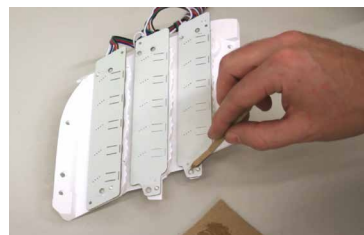


[WATCH THE INSTALLATION VIDEO ONLINE!](#)

Scan the QR code on page 3



4. Place the new Diode Dynamics LED boards into position. All holes should align perfectly. Due to the larger footprint of the new LEDs, the panels will not push down fully in place. One of the LEDs in each segment may be partially obstructed by the white housing. This is normal fitment, as intended.



5. Fix the new panels in place by applying epoxy or other permanent adhesive where the plastic rivets were shaved down. The epoxy should create a bond between the plastic rivet point and the board. Use enough epoxy so that there is a bond all the way around the rivet, contacting the board fully.



6. Once the epoxy is fully set, reinstall the black panel and white bezel to the main headlight housing using the original screws.



7. Route the Switchback wire through the headlamp, sealing any holes that you may create.

See back for further instructions.